

# **Re-use Wonder Competition Entries for 2014**



Found the empty shell of this deco clock and had a friend help me make it new again.

**Re-use Wonder Entry 1.**

we took these desks..... and these studs



and made this kitchen!



The breakfast bar and drawer/door fronts were all made from the desk legs and veneer tops and sides. The benchtop was made from the hardwood studs with the help of Bernd Farasin furniture maker.

**Re-use Wonder  
Entry 2.**

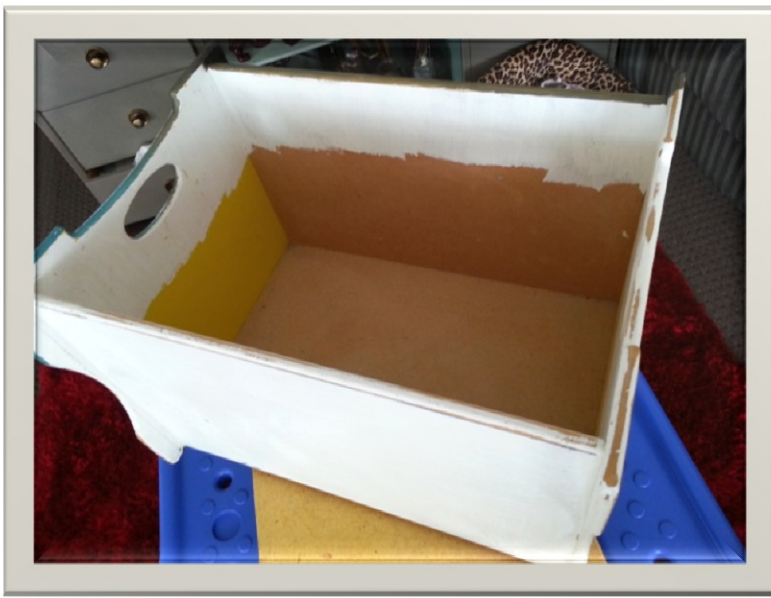


Blackwood chairs + old curtains.  
Some of these chairs were in pretty bad  
nick. I restored them and covered them  
with a pair of old curtains also from the  
Recovery Shop.

**Re-use Wonder Entry 3.**







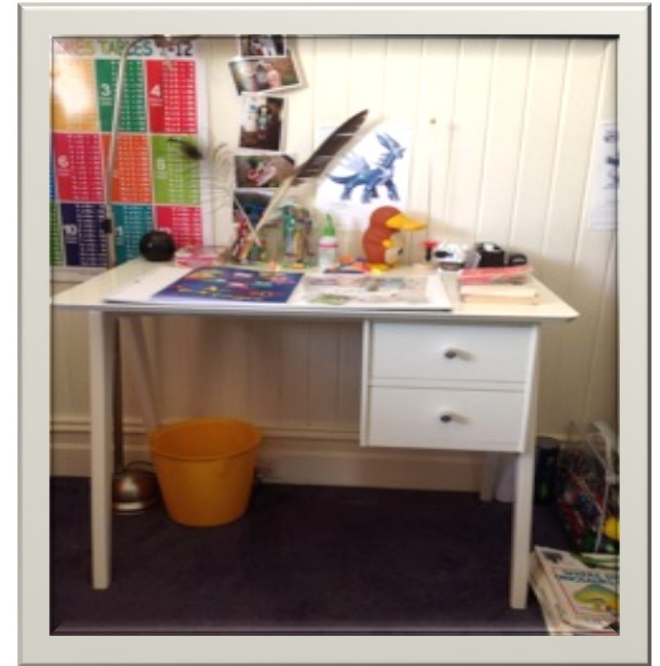
I love to paint and airbrush so I always find something to create. Recently I purchased a wooden toy box. Just a basic wooden box but I loved the shape. I have now painted it and its completely transformed! I painted it for my brother. Its in the theme of an old show we used to watch as kids and he still loves to this day "gumby and friends"

**Re-use Wonder  
Entry 4.**



**Re-use Wonder Entry 5.**





When my 9 year old asked if he could have a desk of his own in his room the first place I thought of looking was the Recovery Shop. All of our furniture has had a "previous life" and buying new didn't even enter my mind. A couple of weeks ago I spotted this little brown desk and I knew it would be perfect. With a few coats of paint and a couple different knobs I think it looks fabulous and so does my son.

**Re-use Wonder Entry 6.**



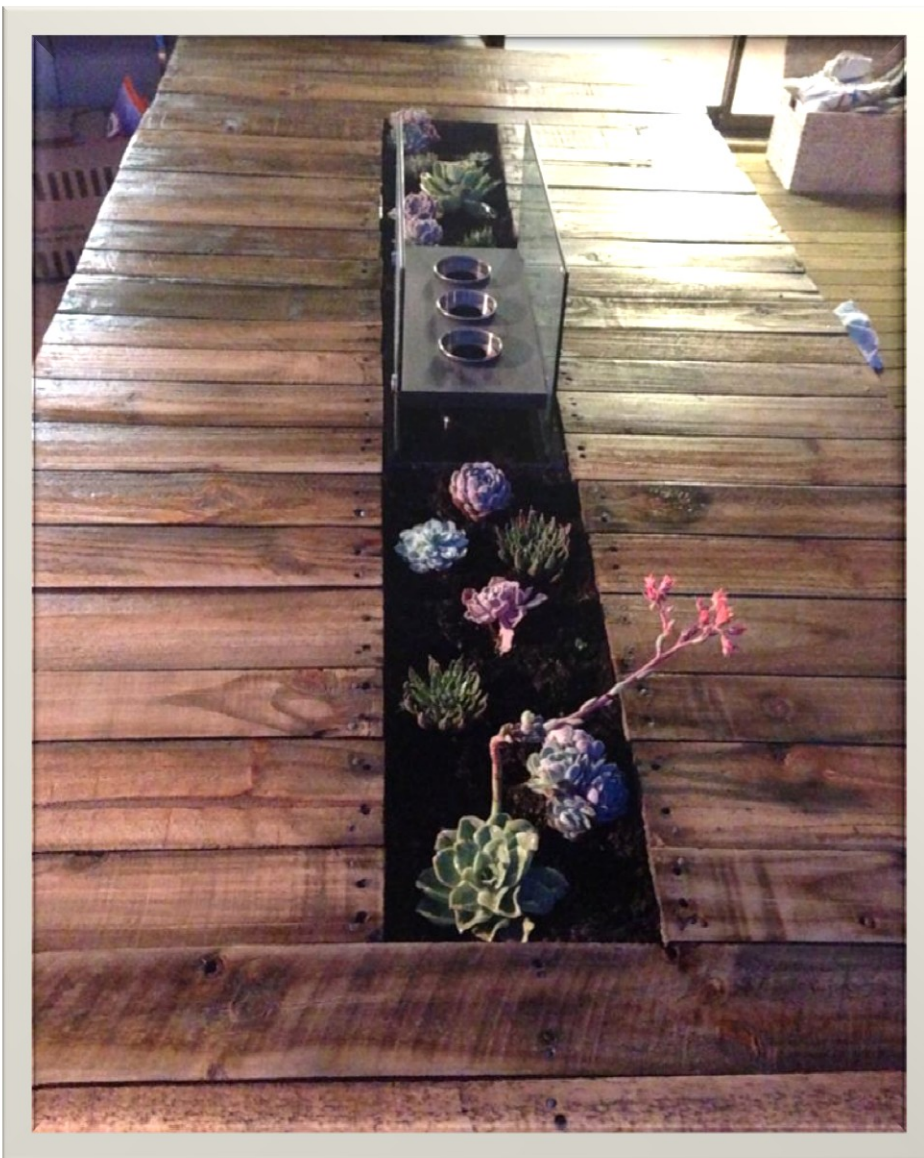
....I should send in a photo for your competition. However I don't believe that anything could beat what my son-in-law did for Xmas - he was looking for something for me to fix my fence and came across all sorts of bits of wood, most of the wood was already painted. He got the idea from something my daughter saw in a shop in Byron Bay. I think he could make them in all sizes.

He is a clever chap with wood and I think this amazing creation might deserve your consideration.

My daughter contributed to the decorations. The star on the top is also a mix of small bits of wood.

**JOINT WINNER OF REUSE  
WONDER COMPETITION 2014  
Re-use Wonder Entry 7.**





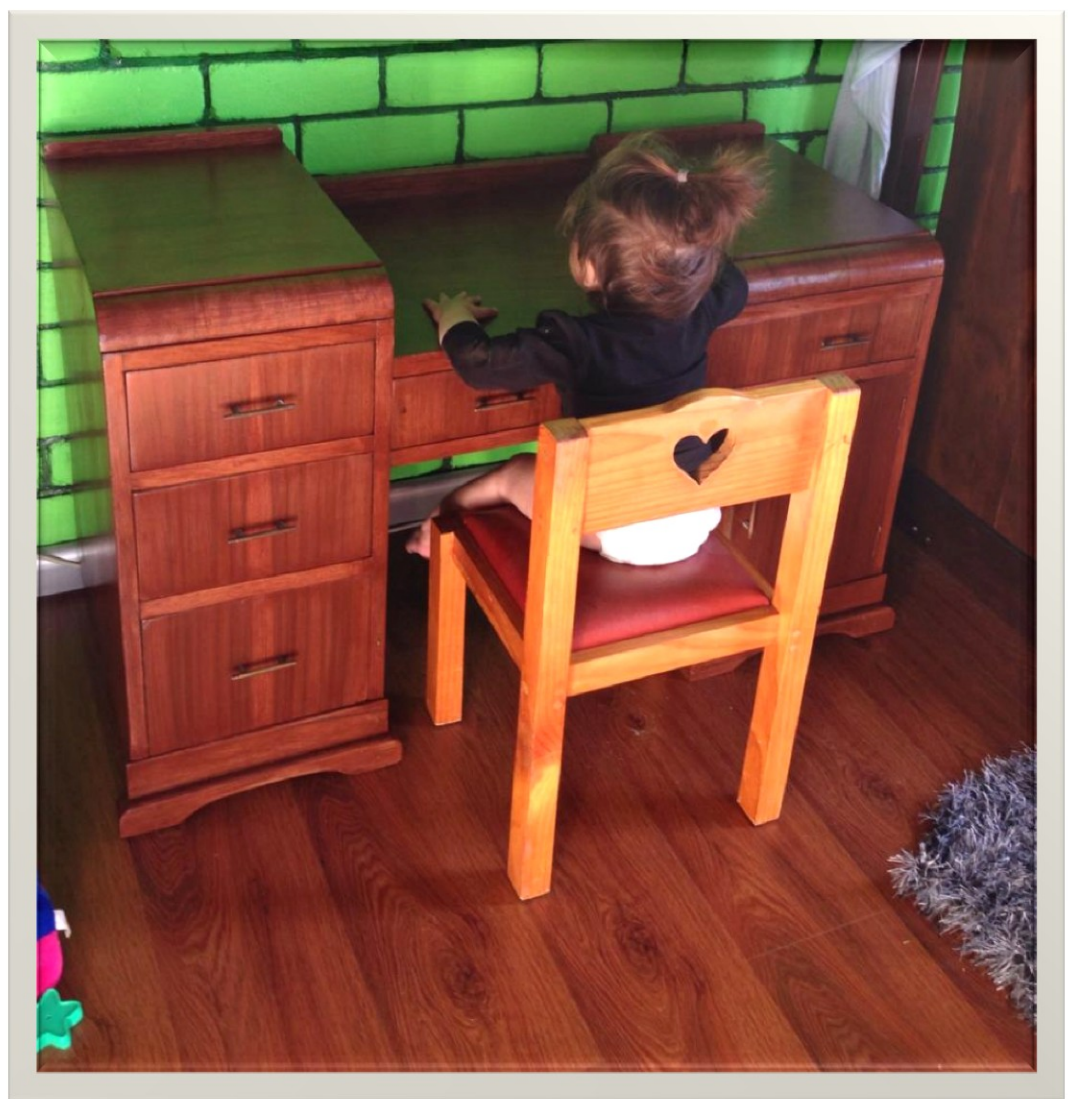
The table I made from scrap wood & a couple of pallets. I constructed a garden bed section from scrap wood & connected it to a frame made from pallets, lined the garden beds with weed matting, disassembled pallet slats arranged them around the garden bed, added legs and lastly sanded & varnished. & then added plants.

**Re-use Wonder Entry 8.**

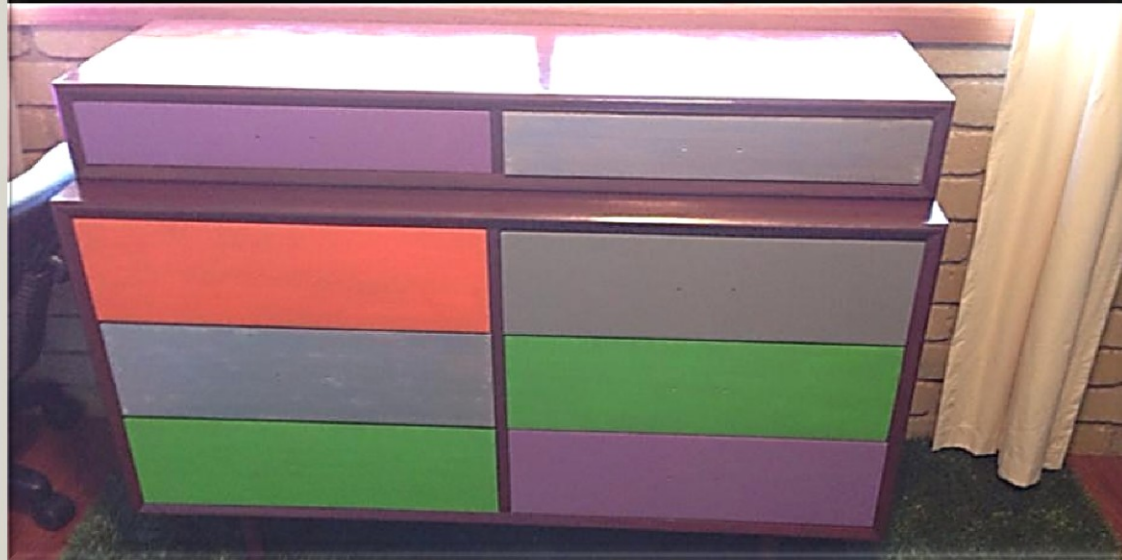


All I did with it was sand it back and gave it a coat of stain, it is perfect for my children to sit at as a desk. (we also bought another similar piece that I did the same with & put out in the shed / studio for my little ones to join me in my creative endeavours).

**Re-use Wonder Entry 9.**







A set of drawers I bought to use in the nursery. I was 38 weeks pregnant when I took on this nesting project. All that needed doing was a good sand, and a new coat of paint & stain.

**Re-use Wonder Entry 10.**



When we moved home last year, we needed a new home for our fish. We couldn't find anything to put them in, so as an avid visitor to the Recovery Shop Glenorchy, went in search of a bath or some other container.

We came across an old webber BBQ for \$12, perfect. We used water proof paint to line the inside and in 5 days was ready for the fish and they have been in there ever since.

**Re-use Wonder Entry 11.**





It's a knackered set of drawers - turned into a hall seat with storage.



**Re-use Wonder  
Entry 12.**



This an example of our Joseph Cornell inspired boxes.

The project is sourced from the Recovery Shop and its titled "STORY BOX".

The children are creating boxes with personal narratives, from the random items provided to them.

The Muse Art School  
contact 0457734526

**Re-use Wonder Entry 13.**





Using super glue and screws I have made these mechanical models and then painted them with spray paint. The materials were bought at your shop. The large collection of hinges you have has been a very useful supply of arms and legs for my creations, as well as other bits and pieces for details. The Mechs are about 40cm tall on average.

**Re-use Wonder Entry 14.**





**Re-use Wonder Entry 15.**







These are some of the photos from our wedding in March 2014. Ninety percent of the decorations were collected and up-cycled from the tip shop. We made a Whisky bar using old decanters and books. Our wedding sign was made from an old mirror and easel we found at the tip shop. We collected items for months so we could have lots of vintage random decorations, everything from tea cups, pots, books, jars, bottles, baskets, frames etc....the bride even made most of the flowers out of paper.

**Re-use Wonder Entry 16.**

Our pallet  
table, sanded  
and sealed with  
poly.



**Re-use Wonder  
Entry 17.**





The mini kitchen for my little one. I purchased a cabinet, a laundry trough, couple of old cupboard doors, scrap timber of all sizes, microwave tray, oven trays and some paint. Then when it was all together we purchased dinner set, tea pot and milk jug, chopping boards and every kitchen item we could get hold of! Lets say its very popular with everyone that has seen it.

**Re-use Wonder Entry 18.**

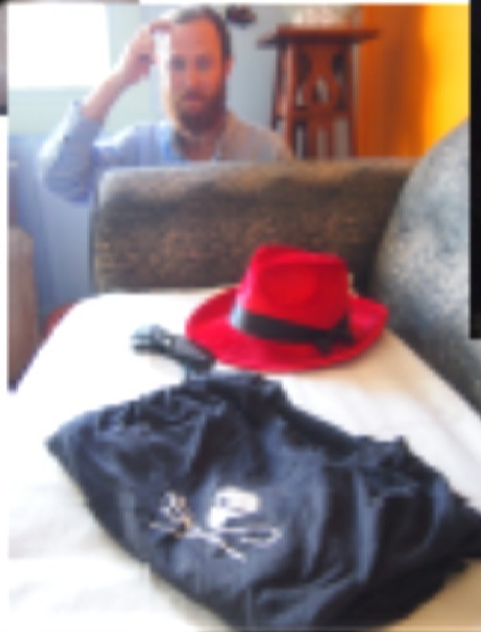


This is my re-cycled patio area, it really is amazing what I have found over time. Especially the sad sick plants I brought back to life.



**Re-use Wonder Entry 19.**





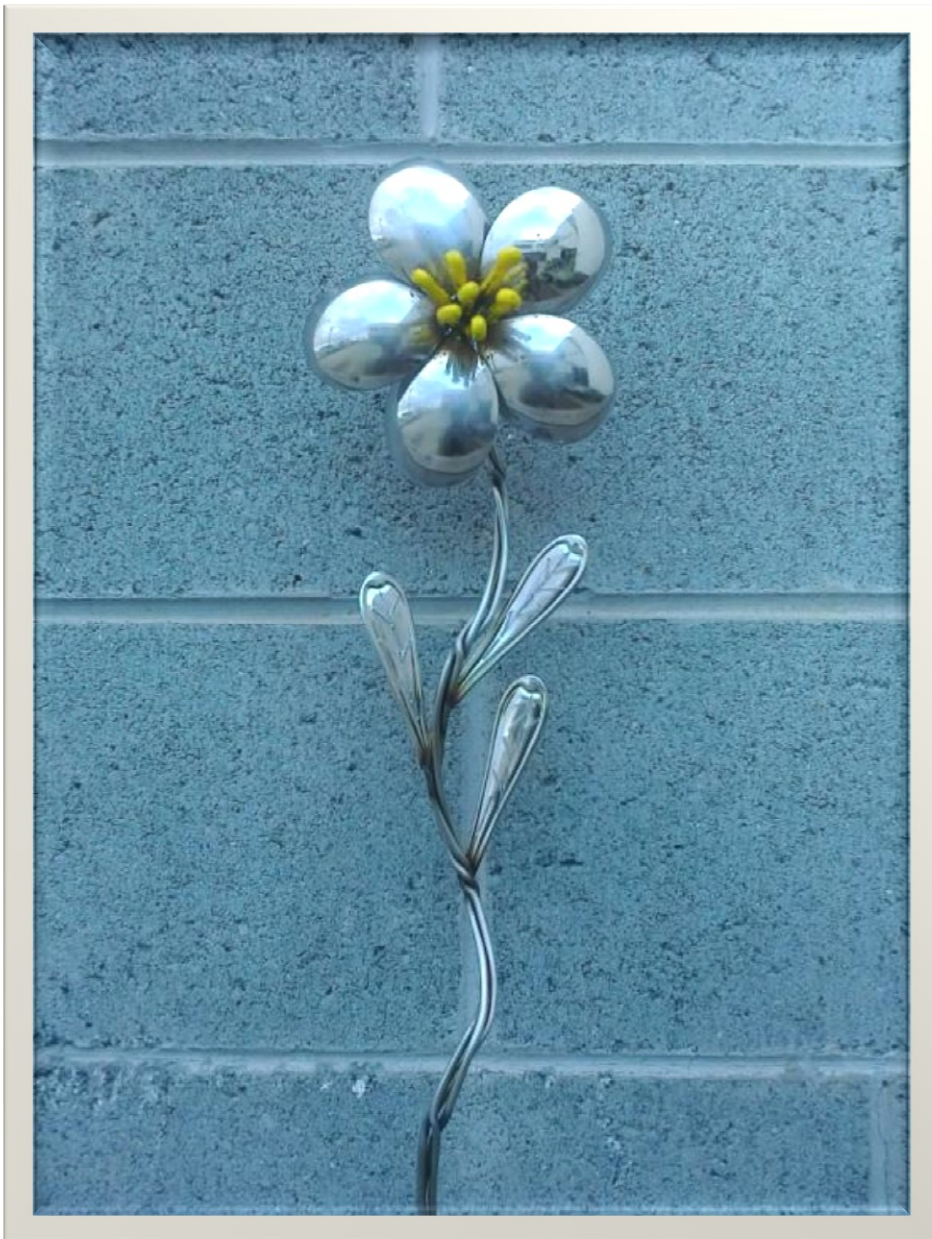


The first photo is our fish pond that was all overgrown. We found the old watering can that we were going to plant up.... until my clever husband had the idea of using it as the water feature! The second is the old water urn that we decided to plant up and pop next to the pond. Hopefully if we can get the fern to grow big enough it will offer shade to the fish! The third are some old tyre rims that have been prettied up and planted out as a garden feature... My 7 year old helped with this and we love it! Can't wait to come scouring for more projects to do!

**Re-use Wonder Entry 21.**

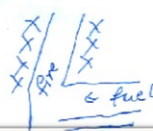


**Re-use  
Wonder  
Entry 22.**





INDOOR ROCKET STOVE



principle of rocket stove is the insulated combustion tube which creates a constant high temperature and clean burn. Runs on wood scrap, branches etc. This indoor model is made with a firebox to allow longer between loading



bq plate laid on

Re-Use Wonder Entry 23.



**Re-use Wonder  
Entry 23.**





**Re-use Wonder Entry 25.**





Aether Cannon - Used in the great steampunk wars of '68.

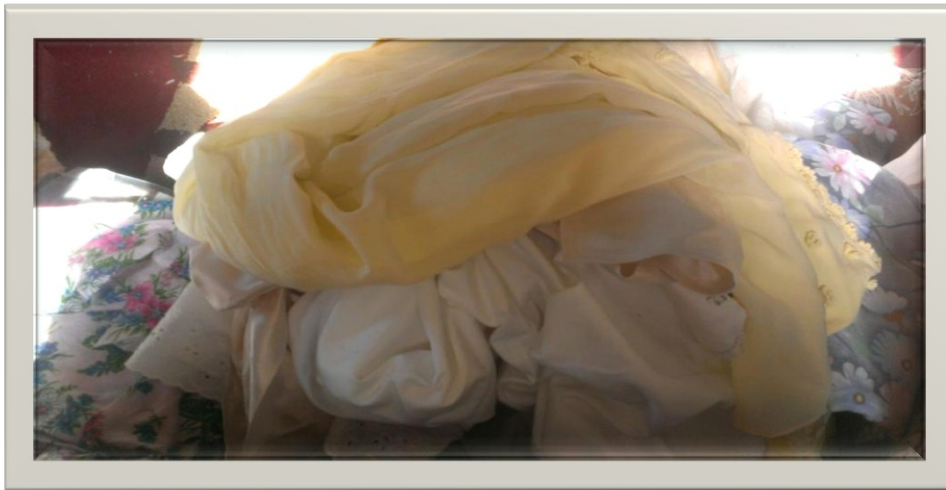
**Re-use Wonder Entry 26.**



"Fluffy the Water Dragon" - made from bits of industrial scrap, sewing machine parts, and spoons.....LOTS of spoons.

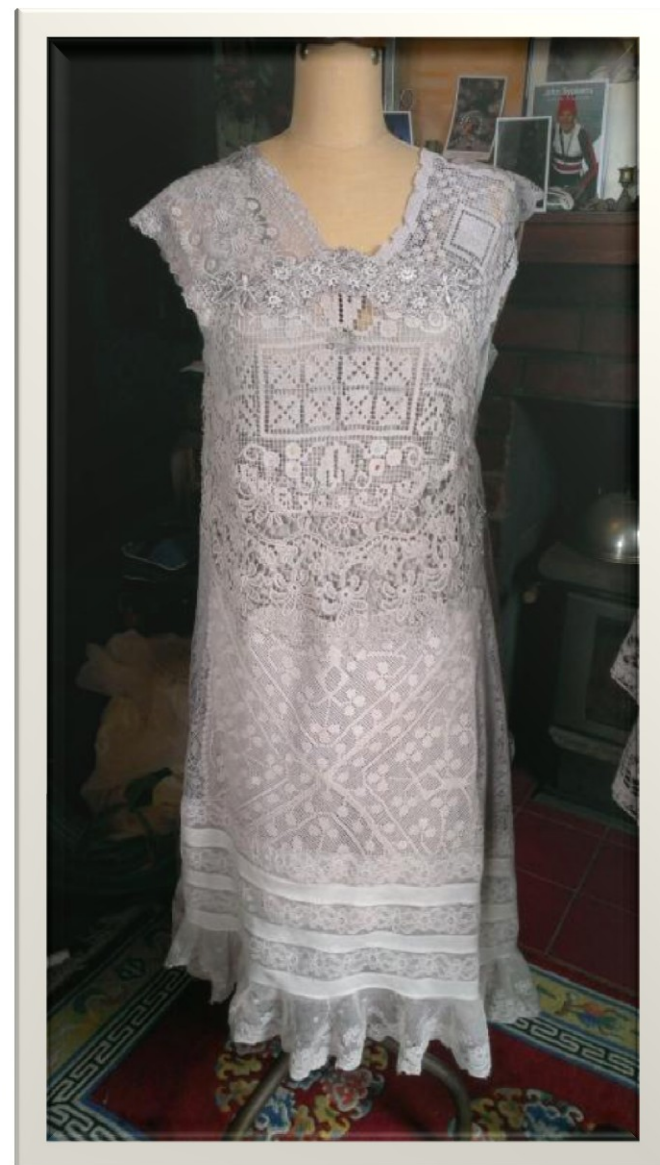
**JOINT WINNER OF REUSE WONDER COMPETITION 2014**  
**Re-Use Wonder Entry 27.**





This is some cloth I bought at the Glenorchy Recovery Shop which was of the genesis of my latest garment. As a child I loved jigsaw puzzles, as a teenager I made a crazy patch work skirt and then a quilt which I still have. My most recent obsession is tablecloths, lace curtains and doilies died with plant material to a uniform colour palette. I have used simple Japanese design so the focus is on the fabric.

**Re-use Wonder Entry 28.**





Re-use Wonder Entry 29.





How use for Pedestrian Grocery Shopping  
Shower Seat Supports Store Basket During Purchase  
& Easy-rise Seat for Fatigued Pedestrian



Frame from Transfer Seat not yet needed as such.  
Lid from a Pram Frame Piece. Outer from a  
dismantled Sleeping Bag.  
Cooler Bag also from Resource Centre



Travel Carryall for Nomads Bag on



Bag off



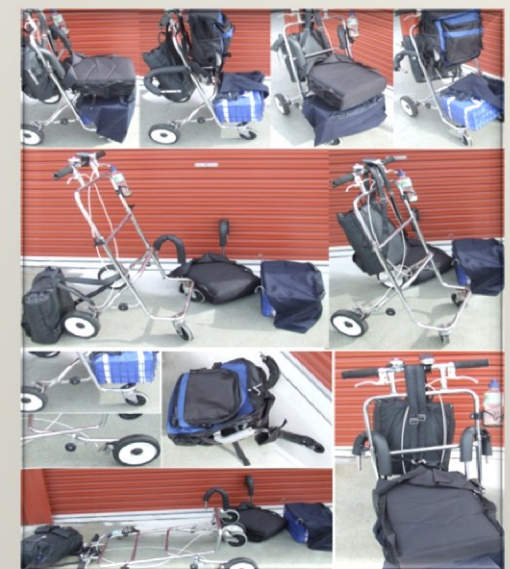
Folded  
Bag off



Folded Bag on

This selection has been put by Joan – who in a different life would have been an Engineer, she is over 80 and going blind much to her frustration. Joan has put together this series to share her ideas on aging, creative mobility, and how to keep as active as possible – but with a bit more ease.

**Re-use Wonder Entry 30.**





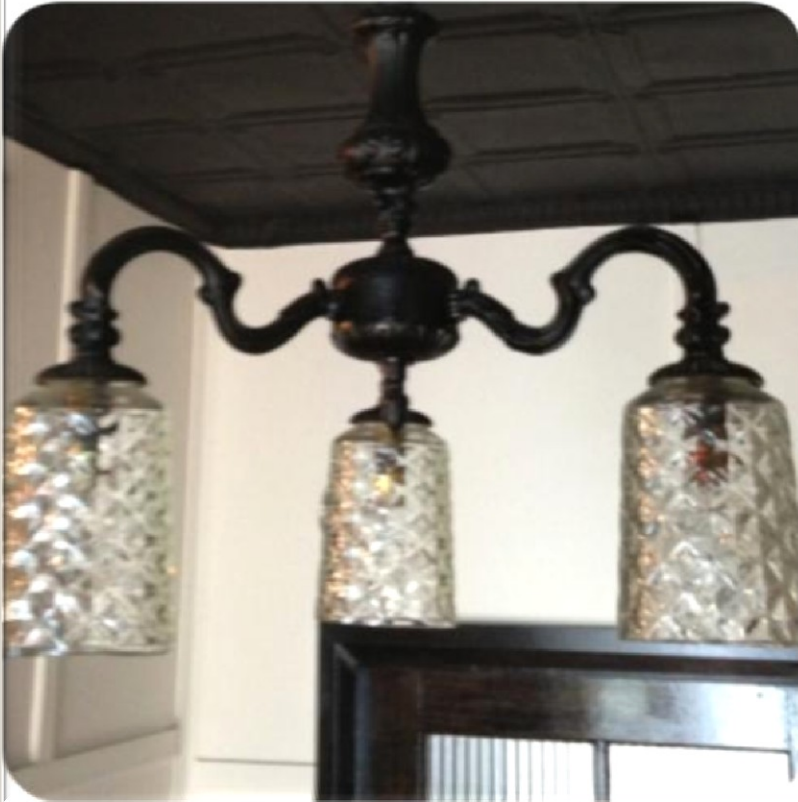


The prolific &  
amazing Joan  
continued.

**Re-use Wonder  
Entry 30.**







Jim Beam Bottle  
Chandelier

**Re-use Wonder  
Entry 31.**

# **A Re-use Wonder Story – Fluorescent Tube Ceiling from 1980's**

Thirty years ago my father had access to a very large quantity of four foot fluorescent light tubes. They were all going to be dumped but many were still operating.

Rather than see them all go to waste he thought about a finding use for them.

Because there was such a large amount of them [literally thousands and more available on an ongoing basis] there was enough to cover a large area.

In those days it was estimated that it was more cost effective to completely change all the fluorescent tubes in big buildings on a regular basis rather than replace them when they started to flicker.

**He designed a way of making a ceiling out of them by making batons in the shape of an inverted “T” so that the tubes would lie on the batons.**

**The ceiling was batoned and the tubes lay between the batons. Painting had to be done with a spray gun to get into the crevices. Although the ceiling was a little more delicate than normal it had a great effect visually.**

Two foot tubes were also used in the same manner to cover smaller multiples.

Both length tubes were used in another ceiling alternately to give a different effect.





Made from bits and pieces of timber, metal & twine – all sourced from the Recovery Shop – this one is about 6 months in the making.

**Re-use Wonder Entry 32.**